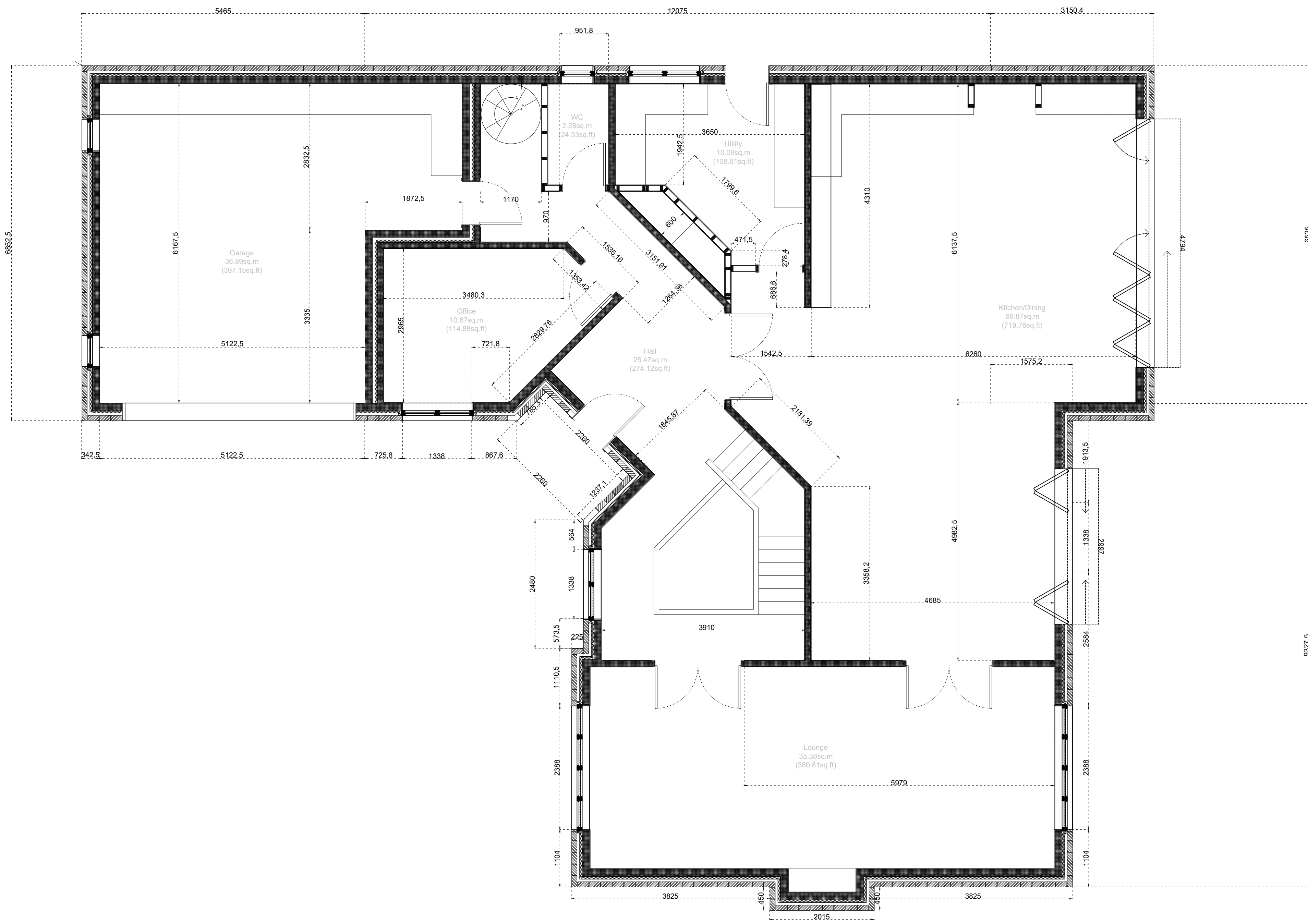


Revision: SUPERCEDES DRAWING No. A01.022.a09
 Windows have been centered.
 New windows added to the south-facing wall of the garage and a render finish has been introduced.

FOOTPRINT
 277.62sq.m
 (2450.09sq.ft)

FOOTPRINT + 250MM
 246.94sq.m
 (2158sq.ft)

STORAGE
 1.38sq.m
 (14.8sq.ft)



OAK HOUSE Ground Floor Plan (1:50 @ A1)



Contact: enquiries@3as-design.com

Sheet Number: **A01.023.a09**

Drawn Date: 18 May 2018 Drawn By: RS