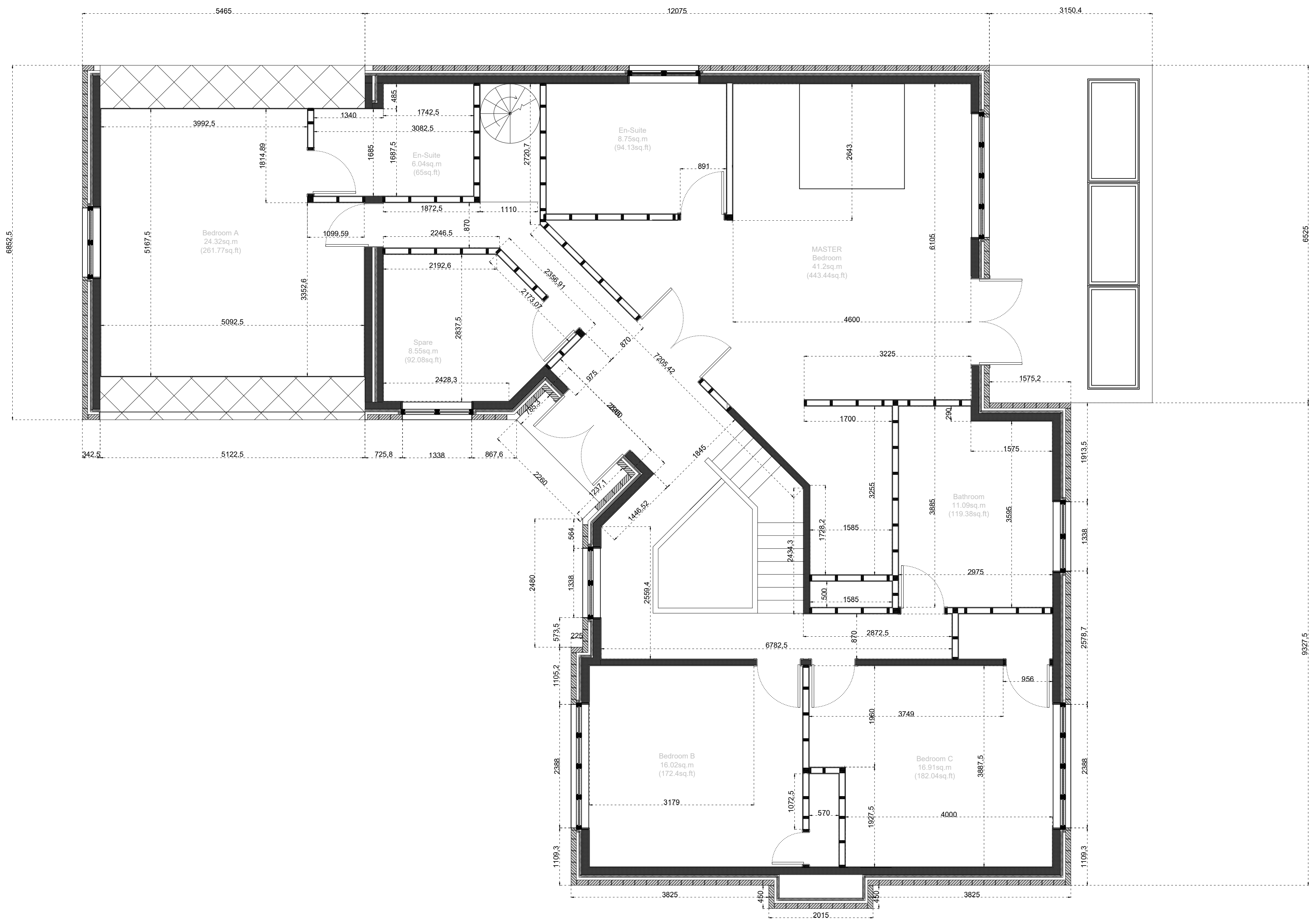


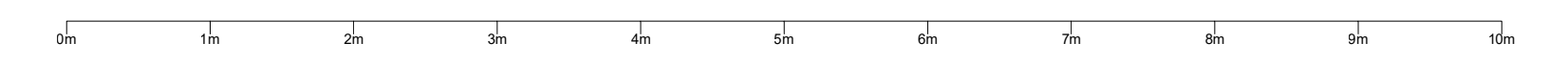
Revisions: SUPERCEDES DRAWING No. A01.022.a10  
 Windows have been centered.  
 Doors for cupboards altered on two of the bedrooms.  
 Door and window on the balcony for the master bedroom has been realigned.  
 New windows added to the south-facing wall of the garage and a render finish has been introduced.

STORAGE (Combined)  
 3.38sq.m  
 (36.39sq.ft)

BALCONIES (Combined)  
 21.33sq.m  
 (240.37sq.ft)



# OAK HOUSE First Floor Plan (1:50 @ A1)



Contact: [enquiries@3as-design.com](mailto:enquiries@3as-design.com)

Sheet Number: **A01.023.a10**

Drawn Date: 18 May 2018      Drawn By: RS